

### 0.1-70GHz SPDT Switch, Broadband



#### Description:

AT-SPDT-0070T2 is high power, wide band SPDT switch from 0.1-70GHz. The switch is controlled by TTL with +/-5V power supply. The switch is with good high isolation and good return loss performance.

The modules is with 1.85mm female connector, other connectors can be provided according to request.

More information, visit [www.atmicrowave.com](http://www.atmicrowave.com)

#### Feature

- ✓ Frequency: 0.1-70GHz
- ✓ Low insertion Loss, -7.2 dB
- ✓ High isolation: -50dB
- ✓ Very fast speed

#### Application

- ✓ Test Equipment
- ✓ ROF (RF Over Fiber)
- ✓ Radar System
- ✓ Telecom Communication

### Electronical Specifications:

Parameter	Min	Typical	Max
Frequency		0.1-70GHz	
Insertion Loss		-7.2dB	-9.5
Isolation	-35	-50 dB	
Return Loss		-10dB	
Switching Time		100ns	
P1dB @17GHz		+20dBm	
Bias Voltage		+/-5V, 20mA	
Control		TTL	
Spec Temp		25C	





# AT-SPDT-0070T2

## 0.1-70GHz SPDT Switch

### Mechanical Information

Item	Description
Input Port	1.85mm Female
Output Port	1.85mm Female
Bias/Control	Feed Through Pin
Case Material	Copper
Finish	Gold Plated
Weight	50g
Size:	See outline

### Absolute Maximum Ratings Table

Parameter	Value
Control Voltage	+8V
RF Input Power	+23dBm
Operating Temperature	-40 to +85C
Storage Temperature	-65 to +150C

### TTL and Bias Voltage

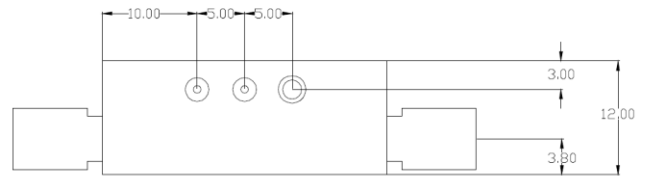
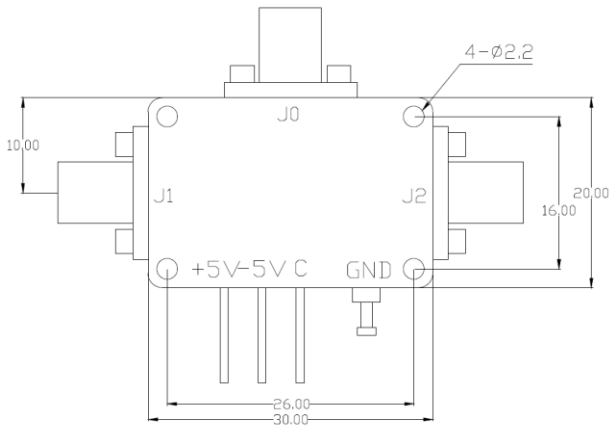
TTL/Bias	Voltage
High	2.0 to 5.5V
Low	0 to 0.8V
VDD	+5V ( +/-5%)
VEE	-5V ( +/-5%)

### Truth Table

C	J0-J1	J0-J2
High	ON	OFF
Low	OFF	ON



## Dimension (mm)



SP2T

## Notes:

1. Datasheet may be changed according to update of MMIC, Raw materials , process, and so on.
2. This data is only for reference, not for guaranteed specifications.
3. Please contact AT Microwave team to make sure you have the most current data.

